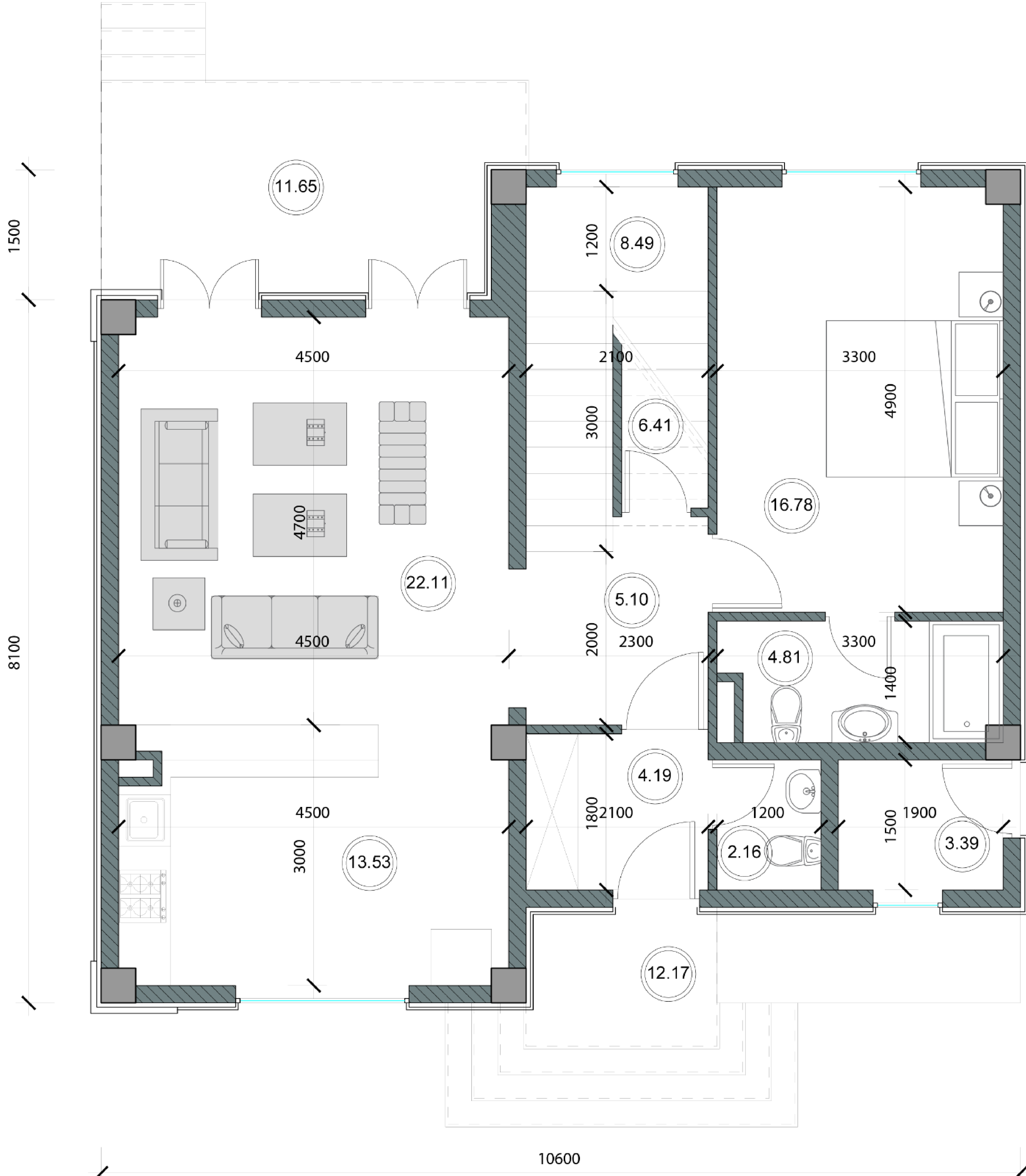


# Villa B1

Total area	164 sqm	Floor 1	98 sqm
Land area	650 sqm	Floor 2	66 sqm

## Floor 1



Entrance hall	4.2 sqm	Bathroom	2.2 sqm
Corridor	5.1 sqm	Storage room	6.4 sqm
Living room	22.1 sqm	Staircase	8.5 sqm
Kitchen	13.5 sqm	Technical room	3.4 sqm
Bedroom	16.8 sqm	Terrace	11 sqm
Bedroom	4.8 sqm		

## Floor 2



Entrance hall	4.2 sqm	Bathroom	2.2 sqm
Corridor	5.1 sqm	Storage room	6.4 sqm
Living room	22.1 sqm	Staircase	8.5 sqm
Kitchen	13.5 sqm	Technical room	3.4 sqm
Bedroom	16.8 sqm	Terrace	11 sqm
Bedroom	4.8 sqm		